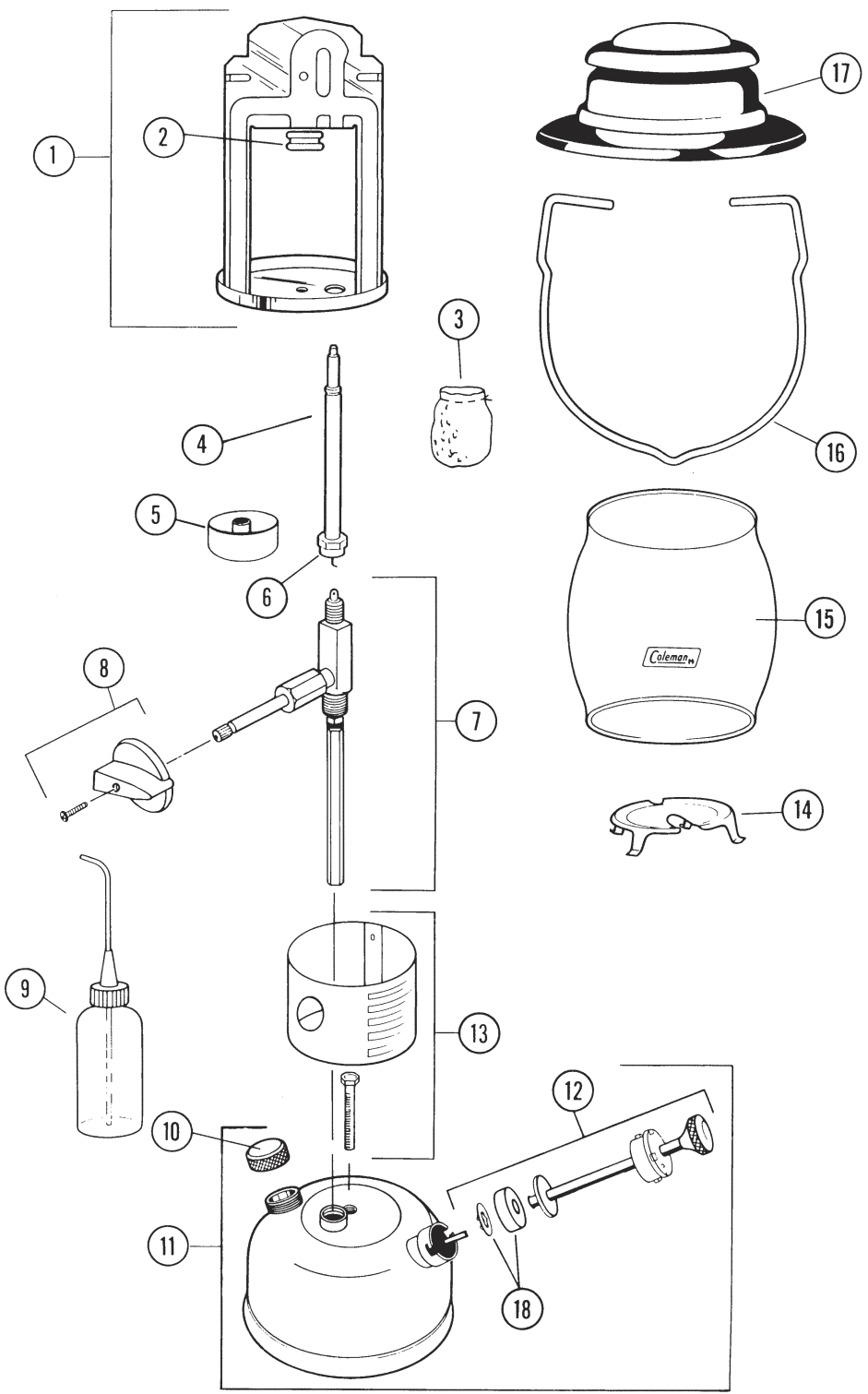


# Parts List For Coleman® Lantern model 639C700

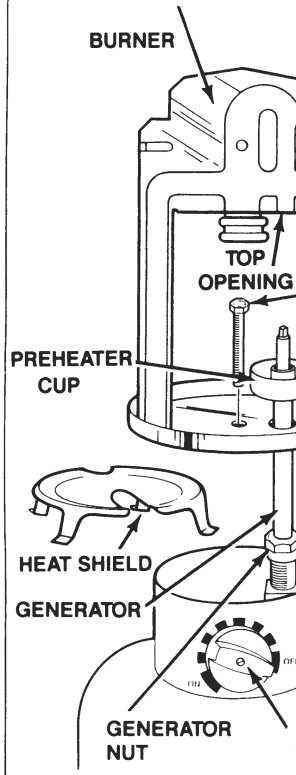
| ITEM NO. | PART NO. | DESCRIPTION        |
|----------|----------|--------------------|
| 1        | 635-3265 | BURNER ASSY.       |
| 2        | 635-3155 | BURNER CAP         |
| 3        | #11      | MANTLE             |
| 4        | 639C2992 | GENERATOR (K-6)    |
| 5        | 201-5101 | PREHEATER CUP      |
| 6        | 288-1621 | GENERATOR NUT      |
| 7        | 639-6571 | VALVE ASSY.        |
| 8        | 288C1501 | KNOB ASSY.         |
| 9        | 201-5511 | ALCOHOL BOTTLE     |
| 10       | 220D1401 | FUEL CAP           |
| 11       | 639-5151 | FOUNT ASSY.        |
| 12       | 242J5201 | PUMP PLUNGER ASSY. |
| 13       | 639-5291 | COLLAR AND BOLT    |
| 14       | 635-1151 | HEAT SHIELD        |
| 15       | 690A0581 | GLOBE              |
| 16       | 635B4231 | BAIL HANDLE        |
| 17       | 639A4851 | VENTILATOR         |
| 18       | 639-1091 | PUMP CUP & NUT     |



# Generator Re

The generator vaporizes fuel up inside the generator and burner than normal. Replace

1. Turn FUEL VALVE to "OFF".
2. Remove HEAT SHIELD.
3. Unscrew CENTER BOLT.
4. Unscrew GENERATOR CLEANING ROD.
5. On new generator, pull CLEANING ROD. Caution: Do not use cleaning rod.
6. Wrench-tighten GENERATOR NUT.
7. Replace BURNER making sure top of generator fits into TOP OPENING.
8. Replace HEAT SHIELD.
9. Check MANTLE for damage.
10. Visually check for leaks.



U.S. PAT. NO. 4,522,582

How To Use an  
Coleman® K  
model 639C

**Warranty**  
This product will be free from defects in material and workmanship. Replacement will be made with a new or similar product of equal or greater value. No warranty is provided for use of the product, use on improper voltage or current, use in commercial, in profit or non-profit instructional or rental center. Further, the warranty does not cover Acts of God, such as fire, flood, or other causes beyond our control.

**DISCLAIMER:** BY THE BREACH OF ANY EXPRESS OR IMPLIED WARRANTY, MERCHANTABILITY OR FITNESS FOR A PARTICULAR PURPOSE IS DISCLAIMED. NO WARRANTIES DO NOT ALLOW THE EXCLUSION OR LIMITATION OF AN IMPLIED WARRANTY LASTS, SO THE ABOVE LIMITATIONS OR EXCLUSIONS MAY ALSO HAVE OTHER RIGHTS THAT VARY FROM STATE TO STATE.

For more information, contact your local Coleman service center by calling 1-800-835-3278 or TDD 316-832-8707 in Kansas. Attach to the product a tag that includes your name, address, daytime phone number, and the date of purchase. Fully package the product and send either by courier or insured mail.

© 1998 Coleman Company, Inc.  
Wichita, KS 67219 U.S.A.  
1-8707

Some of the lantern are registered trademarks of The Coleman Company, Inc.

## Follow Instructions And Warnings To Avoid Serious Injury, Fire, Or Death

### ⚠️ WARNING:

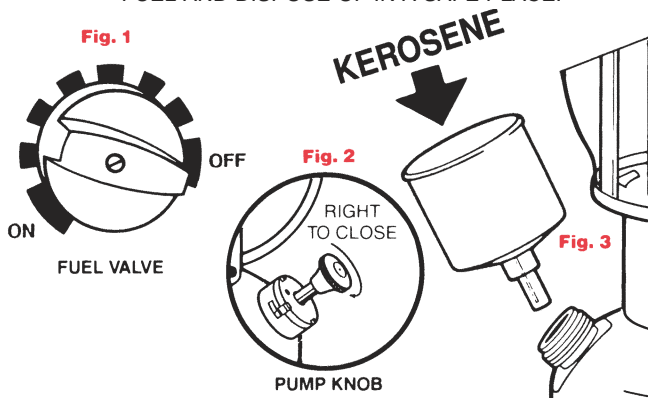
1. This lantern is designed to use clean, clear kerosene. Never use Coleman® fuel, gasohol, regular or premium leaded automotive fuel.
2. Store fuel in a clean, properly marked container away from flame (including pilot lights), other sources of ignition, or excessive heat.
3. Always fill outdoors. Never fill lantern, loosen or remove fuel cap while lantern is lighted, near flame (including pilot lights), other ignition sources, or while top of lantern is hot to touch.
4. Always light and use lantern outdoors; never inside house, camper, tent, or other unventilated or enclosed areas.
5. This lantern consumes air (oxygen). Do not use in unventilated or enclosed areas to avoid endangering your life.
6. Keep lantern away from flammables. Never allow fabric, clothing, or any flammable material to come within four feet of the top and one foot of the side of the lantern.
7. Use for lighting only. Never alter in any way or use with any device or part not expressly approved by Coleman. Do not use as a space heater.
8. Replace any mantle with a hole in it. A hole can cause lantern to overheat and create a hazard.
9. Keep out of reach of children.

1. Ventilator & Bail
2. Mantle
3. Globe
4. Preheater Cup
5. Heat Shield
6. Alcohol Bottle
7. Fuel Valve
8. Fuel Cap
9. Pump Knob
10. Fount

## 1 To Fill

Always fill outdoors. Never fill lantern, loosen or remove fuel cap while lantern is lighted, near flame (including pilot lights), other ignition sources, or while top of lantern is hot to touch.

1. Turn FUEL VALVE to "OFF". (Fig. 1)
2. Close PUMP KNOB firmly. Turn in direction of arrow. (Fig. 2)
3. Remove FUEL CAP. Use a Coleman® filter funnel and fill with clean, fresh fuel. Lantern must be in a level position. DO NOT TIP. (Fig. 3)
4. Replace FUEL CAP on lantern and on fuel container. Tighten firmly. WIPE UP ANY SPILLED FUEL AND DISPOSE OF IN A SAFE PLACE.



## 2 To Tie

1. ALWAYS USE COLEMAN®
2. Tie MANTLE in groove in BURNER. Distribute folds evenly. Cut string 1/4" from top. Once the MANTLE has been burned it will be burned if it is with finger or nail.
3. Light bottom of MANTLE evenly. Burn in but white. Once the MANTLE has been burned it will be burned if it is with finger or nail.
4. Allow MANTLE to burn before lighting.
5. Install GLASS VENTILATOR, and

## 4 To Light

1. Fill PREHEATER CUP with alcohol (do not use gasoline or kerosene) using bottle provided. (See Fig. 6)
2. Light alcohol with a match through lighter hole. (See Fig. 7)
3. Allow flame to consume nearly all the alcohol, then turn FUEL VALVE to "ON".  
**CAUTION:** Flames other than at mantle indicate flooding or a leak. Turn FUEL VALVE "OFF", allow flames to burn out and lantern to cool. Carefully review instructions and correct problem before relighting lantern.
4. To clean tip, turn FUEL VALVE from "ON" to "OFF" to "ON" several times.
5. Additional pumping will be required at intervals. Good air pressure is important.

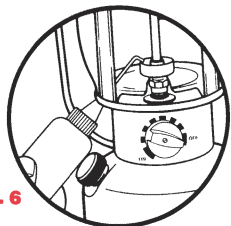


Fig. 7

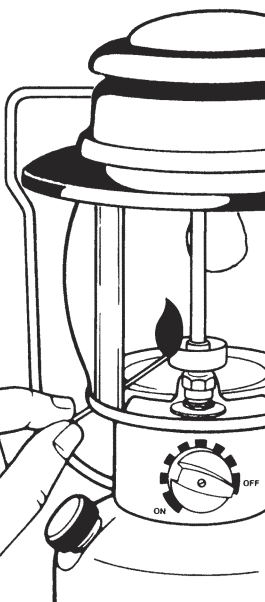


Fig. 6

## 5 To Turn Off

1. Turn FUEL VALVE to "OFF". Light will dim and go out in about 1-2 minutes.

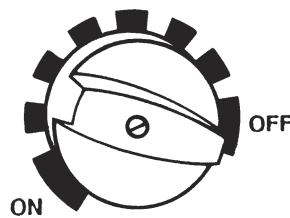


Fig. 8

## Things You Should Know

1. If lantern lights poorly or burns dimly, the globe tip, turn FUEL VALVE from "ON" to "OFF" to "ON".
2. For best results, use only clean, clear kerosene. Dirty fuel may shorten generator life, damage lantern performance.
3. Rinse tank occasionally with fresh fuel to remove moisture accumulations. If lantern is to be stored, rinse annually with fresh fuel.
4. Oil pump periodically to keep it working smoothly.
5. The usual storage areas for camping and picnicking are garage areas, place your lantern in a plastic bag.
6. For repair service call one of the numbers listed below. If lantern must be repaired, your name, address, and a description of problem. Prepaid, less globe and ventilator to the Service Center or factory, refer to your lantern manual.
7. Carry a spare set of Coleman® Mantles. One set is included. Do not use if damaged or touched.
8. If not completely satisfied with performance, call the numbers listed below. Do not return the product.